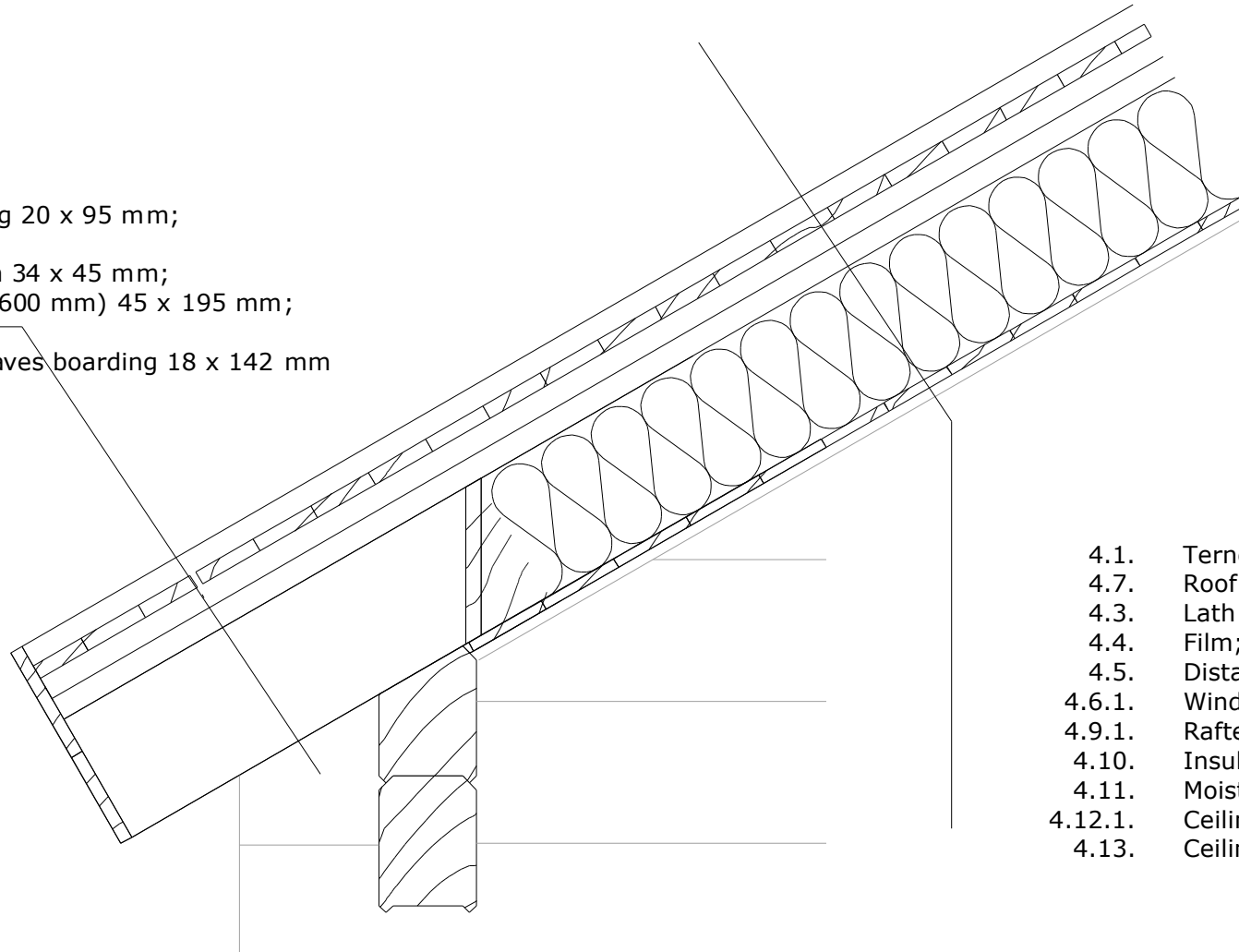


- 4.1. Terne plate;
- 4.7. Roof boarding 20 x 95 mm;
- 4.3. Lath of film;
- 4.5. Distance lath 34 x 45 mm;
- 4.9.1. Rafter (step 600 mm) 45 x 195 mm;
- 4.14. Gable and eaves boarding 18 x 142 mm



- 4.1. Terne plate;
- 4.7. Roof boarding 20 x 95 mm;
- 4.3. Lath of film 34x45 mm;
- 4.4. Film;
- 4.5. Distance lath 34 x 45 mm;
- 4.6.1. Wind barrier (paper);
- 4.9.1. Rafter 45 x 195 mm;
- 4.10. Insulation 200 mm;
- 4.11. Moisture/air barrier;
- 4.12.1. Ceiling panelling 15 x 120 mm;
- 4.13. Ceiling skirting 19 x 40 mm

### Terne plate

Position:

4

Scale:

1 : 10